

1969 RAMBLER - JAVELIN AND A. M. X.

ALTERNATOR

Model: 69-30 -70

Group: 3-016

<u>Part No.</u>	<u>Description</u>	<u>No. Per Unit</u>	<u>Remarks</u>
R71-01-57	Alternator Assy.	1	For Components Refer 67-10 Catalogue Amendment
R41-01-65	Fan-Alternator	1	
R41-01-66	Pulley Alternator	1	
R41-01-69	Regulator-Alternator	1	

1969 RAMBLER - JAVELIN AND A. M. X.

COIL

Model: 69-30-70

Group: 3-056

<u>Part No.</u>	<u>Description</u>	<u>No. Per Unit</u>	<u>Remarks</u>
R31-01-25	Coil and Bracket Assembly	1	

1969 RAMBLER - JAVELIN AND A. M. X.

ELECTRIC HORNS

Model: 69-30-70

Group: 3-105

"

<u>Part No.</u>	<u>Description</u>	<u>No. Per Unit</u>	<u>Remarks</u>
R902-01-08	Horn Assy. - Low Note	1	
R902-01-09	Horn Assy. - Low Note	1	

1969 RAMBLER - JAVELIN AND A. M. X.

SWITCH ESCUTCHEON

Model: 69-30-70

Group: 3-145-22-038

<u>Part No.</u>	<u>Description</u>	<u>No. Per Unit</u>	<u>Remarks</u>
R902-21-02	Escutcheon Light Switch	1	
R902-21-03	Escutcheon Wiper Switch	1	
AUS9876015	Spire Fix	4	

1969 RAMBLER - JAVELIN AND A. M. X.

DIPSWITCH

Model: 69-30-70

Group: 3.158

<u>Part No.</u>	<u>Description</u>	<u>No. Per Unit</u>	<u>Remarks</u>
R71-01-78	Dipswitch	1	

1969 RAMBLER - JAVELIN AND A. M. X.

HEADLAMP LIGHT UNIT

Model: 69-30-70

Group: 3-280

<u>Part No.</u>	<u>Description</u>	<u>No. Per Unit</u>	<u>Remarks</u>
R802-01-34	Light Unit Sealed Beam	2	

1969 RAMBLER - JAVELIN AND A. M. X.

ACCELERATOR LEVER

Model: 69-30-70

Group: 4-050

<u>Part No.</u>	<u>Description</u>	<u>No. Per Unit</u>	<u>Remarks</u>
R902-21-25	Bellcrank and Bracket Assy.	1	

1969 RAMBLER - JAVELIN

ROAD WHEEL

Model: 69-70

Group: 8.000

<u>Part No.</u>	<u>Description</u>	<u>No. Per Unit</u>	<u>Remarks</u>
R71-02-47	Road Wheel	5	
R902-01-01	Wheel Trim	4	

.1969 RAMBLER - JAVELIN AND A. M. X.

BRAKE PIPES AND CABLES

Model: 69-30-70

Group: 8-000

Part No.	Description	No. Per Unit	Remarks
R802-01-04	Cable - Park Brake	1	
R802-01-05	Pipe-Brake M/Cyld - 3 Way Union R. H. Front	1	
R802-01-06	Pipe-Brake M/Cyld - 3 Way Union	1	
R802-01-07	Pipe-Brake 3 Way Union - Warning Switch	1	
R802-01-08	Pipe-Brake Warning Switch - L. H. Front	1	
R802-01-09	Pipe-Brake M/Cyld - Warning Switch	1	
R802-01-10	Banjo Union - M/Cyld.	1	
R802-01-28	Bolt - Banjo Union M/Cyld	1	
R802-01-29	Washer-Copper-Banjo Union	1	"3/4" o. d.
R802-01-32	Washer-Copper-Banjo Union	1	13/16 o. d.

1969 RAMBLER - JAVELIN AND A. M. X.

BRAKE PEDAL

Model: 69-30-70

Group: 8-140

<u>Part No.</u>	<u>Description</u>	<u>No. Per Unit</u>	<u>Remarks</u>
R802-01-20	Pedal Assembly Brake	1	
R73-01-16	Pad - Pedal Brake	1	

1969 RAMBLER - JAVELIN AND A. M. X.

STEERING ARM

Model: 69-30-70

Group: 10-035

<u>Part No.</u>	<u>Description</u>	<u>No. Per Unit</u>	<u>Remarks</u>
R802-01-24	Steering Arm L/H	1	
R802-01-25	Steering Arm R/H	1	

1969 RAMBLER - JAVELIN AND A. M. X.

STABILIZER BAR

Model: 69-30-70

Group: 10-260

<u>Part No.</u>	<u>Description</u>	<u>No. Per Unit</u>	<u>Remarks</u>
R802-01-30	Stabilizer Bar	1	

1969 RAMBLER - JAVELIN AND A. M. X.

POWER STEERING HOSE

Model: 69-30-70

Group: 10-470

<u>Part No.</u>	<u>Description</u>	<u>No. Per Unit</u>	<u>Remarks</u>
R802-01-31	Hose - Power Steering Return	1	

1969 RAMBLER - JAVELIN AND A. M. X.

SHOCK ABSORBER

Model: 69-30-70

Group No. 11-200-220

<u>Part No.</u>	<u>Description</u>	<u>No. Per Unit</u>	<u>Remarks</u>
R802-01-02	Shock Absorber Front	2	
R802-01-03	Shock Absorber Rear	2	

1969 RAMBLER - JAVELIN AND A. M. X.

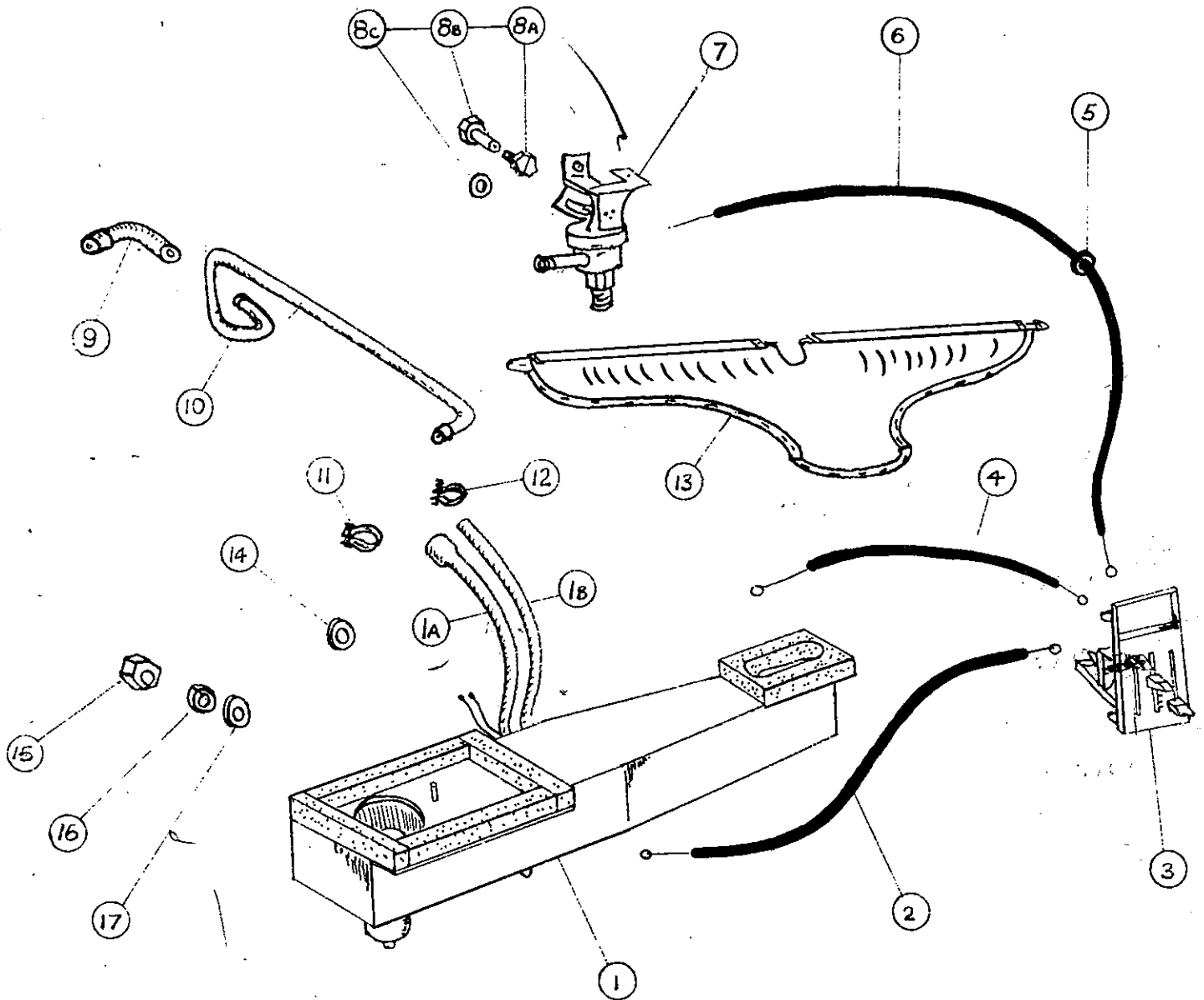
A. M. I. MEDALLION

Model: 69-30-70

Group:12-078

<u>Part No.</u>	<u>Description</u>	<u>No. Per Unit</u>	<u>Remarks</u>
R801-21-01	A. M. I. Medallion R/H	1	
R801-21-02	A. M. I. Medallion L/H	1	
AUS8313002	Fixing Nut	4	

HEATER



HEATER
R71 - 02 - 06

FIG.	PART NO.	DESCRIPTION	QTY.	FIG.	PART NO.	DESCRIPTION	QTY.
1	R71-02-01	Heater & Fan Assy.	1	8C	AUS840008	Washer Plain 1/4" x 9/16" x 1" 1	
1A	R71-02-09	Hose	1	9	R80-10-103	Hose. Tube to water pmp.1	
1B	R71-02-07	Hose	1	10	R80-10-102	Tube. Core to water pmp.1	
2	R71-02-04	Cable. Air vent	1	11	R31-01-13	Hose Clamp	1
3	3586008	Control Assy.	1	12	R71-02-48	Hose Clamp	1
		For components refer A.M.C. Catalogue	1	13	3576597	Demister Duct	1
4	R71-02-02	Cable. Demister	1	14	AUS840007	Washer Plain 1/4" x 1/2" x 1" 1	
5	R71-02-08	Grommet	1	15	AUS830004	Nut 1/4" UNF	3
6	R71-02-03	Cable. Water Valve	1	16	AUS850001	Washer Spring 1/4" ID	3
7	R71-02-05	Water Valve Assy.	1	17	AUS840006	Washer Plain 1/4" x 1" 3	
8A & B	R43-01-27	Trunnion Assy.	1				

1969 RAMBLER - JAVELIN & A. M. X.

Model: 69-30-70

HEATER ASSEMBLY

Group: 13.000

<u>Part Number</u>	<u>Description</u>	<u>No. Per Unit</u>	<u>Remarks</u>
R902-21-20	Heater Assy. Complete	1	
3623537	Duct. & Grille Assembly Defroster Opening	1	
R902-21-08	Controls Assembly	1	
R819-41-31	Cable - Temperature Control	1	
R819-41-32	Cable - Air Control	1	
R819-41-30	Cable - Defroster Control	1	
4000417	Clip - Cable Clamp	3	
R819-42-16	Hose - Core to Tube	1	
R819-42-14	Hose - Water Valve to Core	1	
AUS 0883001	Clip - Cable Clamp	2	
R71-02-05	Water Valve	1	
R43-01-27	Pin - Trunnion Water Valve Cable	1	
R801-01-02	Tube - Core to Water Pump	1	
R801-01-03	Hose - Tube to Water Pump	1	
AUS 0883003	Clamp - Hose to Tube	1	
3122345	Clamp - Hose Pump to Tube	1	
AUS 0883001	Clamp - Hose $\frac{1}{2}$ "	2	
AUS 0883002	Clamp - Hose 5/8	2	
4000491	Screw - Control to Inst. Panel	3	
AUS 8316005	Nut - Hexagon	3	
AUS 8416001	Washer - Flat	3	
R819-41-02	Housing Heater Assembly.	1	
R819-41-03	Door - Defroster	1	
R819-41-05	Shaft - Defroster Door	1	
R819-41-70	Bush - Defroster Door Shaft	2	
AUS 8422101	Washer - Spacer	4	
R819-41-57	Seal - Defroster Door	1	
R819-41-06	Bumper - Defroster Door	1	
R819-41-09	Frame - Fresh Air Door	1	
R819-41-08	Door - Fresh Air	1	
R819-41-12	Shaft - Fresh Air Door	1	
AUS 8422101	Washer - Spacer	4	

1969 RAMBLER, JAVELIN AND A. M. X.

Model: 69-30-70

HEATER ASSEMBLY (Contd.)

Group: 13.000

<u>Part Number</u>	<u>Description</u>	<u>No. Per Unit</u>	<u>Remarks</u>
AUS 8419004	Washer - Shaft To Housing	1	
R819-41-01	Bumper - Fresh Air Door	1	
R819-41-19	Seal - Fresh Air Door	1	
R819-41-87	Plate - Cover Assy. Blower Scroll	1	
R819-41-19	Seal - Housing To Dash Side	1	
R819-41-20	Seal - Housing to Dash Bottom & Side	1	
R819-41-13	Cover - Fresh Air Chamber	1	
R819-41-56	Cover - Distribution Duct. Assy.	1	
AUS 0876016	Clip - Cover to Casing	8	
AUS 0872001	Rivet	6	
R819-41-71	Motor & Fan Assembly	1	
R819-41-27	Motor - Heater 2 Speed	1	
R819-41-29	Insulation - Motor Mounting	1	
R819-41-24	Plate - Motor Mounting	1	
R819-41-25	Seal - Mounting Plate to Dash	1	
AUS 8319004	Nut - Motor to Mounting Plate	2	
AUS 8519001	Washer - Shakeproof	2	
AUS 8419005	Washer - Flat	2	
R819-41-28	Fan - Blower	1	
R819-41-41	Seal - Mounting Plate to Housing	1	
AUS 8319002	Nut - Mounting Plate to Housing	3	
AUS 8519001	Washer - Shakeproof	3	
R819-41-21	Core - Assy. Heater Radiator	1	
R819-41-22	Seal - Core Bottom & Sides	2	
R819-41-23	Seal - Core to Dash	1	
R819-41-44	Seal - Core Upper Housing	1	
R819-41-07	Bracket - Defroster Door Cable Clamp	1	
R819-41-15	Bracket - Fresh Air Control Cable	1	

1969 RAMBLER - JAVELIN AND A. M. X.

FACIA AND INSTRUMENT PANEL

Model: 69-30-70

Group: 22-000

<u>Part No.</u>	<u>Description</u>	<u>No. Per Unit</u>	<u>Remarks</u>
R902-21-01	Facia Panel	1	
R902-21-10	Overlay Facia Panel Upper	1	
R802-21-36	Lens Parking Brake Warning Light	1	
R802-21-37	Lens Foot Brake Warning Light	1	
R902-21-29	Overlay Facia Panel Lower	1	
R802-21-69	Facia Earth Strap	2	Length 5 inches
R802-21-64	Facia Earth Strap	4	Length 2½ inches

1969 RAMBLER - JAVELIN AND A. M. X.

WINDSCREEN WASHER

Model: 69-30-70

Group: 22-000

<u>Part No.</u>	<u>Description</u>	<u>No. Per Unit</u>	<u>Remarks</u>
R802-21-29	Windscreen Washer Kit	1	
R802-21-38	Reservoir	1	
R802-21-39	Bracket - Reservoir	1	
R802-21-40	Pump and Bracket Assembly	1	
R802-21-41	"T" Piece	1	
R802-21-42	Hose - Reservoir to Pump	1	
R802-21-43	Hose - Pump to "T" Piece	1	
R802-21-44	Hose - "T" Piece to L. H. Nozzle	1	
3191498	Nozzle	2	
AUS8617004	Screw - Bracket to Body	1	
AUS8617003	Screw - Bracket to Body	1	
AUS8617003	Screw - Nozzle to Body	2	
R802-21-45	Hose - "T" Piece to R. H. Nozzle	1	

1969 RAMBLER - JAVELIN AND A. M. X.

MIRROR REAR VIEW EXTERNAL

Model: 69-30-70

Group: 27.084

<u>Part No.</u>	<u>Description</u>	<u>No. Per Unit</u>	<u>Remarks</u>
R802-21-71	Mirror Assembly Rear View Exterior	2	

1969 RAMBLER - JAVELIN AND A. M. X.

LOCAL TRIM LIST

Model: 69-30-70

Group: 29-000

<u>Part No.</u>	<u>Description</u>	<u>No. Per Unit</u>	<u>Remarks</u>
<u>Front Seats</u>			
R902-61-10	Front Seat Assy. R/H	1	Black
R902-61-57	Front Seat Assy. R/H	1	Beige
R902-61-21	Front Seat Assy. L/H	1	Black
R902-61-58	Front Seat Assy. L/H	1	Beige
R902-61-13	Cover-Front Cushion R/H	1	Black
R902-61-61	Cover-Front Cushion R/H	1	Beige
R902-61-24	Cover-Front Cushion L/H	1	Black
R902-61-69	Cover-Front Cushion L/H	1	Beige
R902-61-18	Cover-Front Squab R/H	1	Black
R902-61-64	Cover-Front Squab R/H	1	Beige
R902-61-25	Cover-Front Squab L/H	1	Black
R902-61-70	Cover-Front Squab L/H	1	Beige
<u>Rear Seat - Javelin</u>			
R902-61-31	Rear Cushion Assy.	1	Black
R902-61-75	Rear Cushion Assy.	1	Beige
R902-61-32	Cover-Rear Cushion	1	Black
R902-61-76	Cover-Rear Cushion	1	Beige
R902-61-26	Rear Squab Assy.	1	Black
R902-61-71	Rear Squab Assy.	1	Beige
R902-61-27	Cover-Rear Squab	1	Black
R902-61-72	Cover-Rear Squab	1	Beige

1969 RAMBLER - JAVELIN AND A. M. X.

LOCAL TRIM LIST

Model: 69-30-70

Group: 29-000

<u>Part No.</u>	<u>Description</u>	<u>No. Per Unit</u>	<u>Remarks</u>
<u>Quarter Trim Assy. - Javelin</u>			
R902-61-46	Quarter Trim Assy. R/H	1	Black
R902-61-84	Quarter Trim Assy. R/H	1	Beige
R902-61-47	Quarter Trim Assy. L/H	1	Black
R902-61-85	Quarter Trim Assy. L/H	1	Beige
<u>Quarter Trim Assy. - A. M. X.</u>			
R902-61-88	Quarter Trim Assy. R/H	1	Black
R902-61-89	Quarter Trim Assy. L/H	1	Black

1969 RAMBLER - JAVELIN AND A. M. X.

LOCAL PARTS LIST

Model: 69-30-70

Group: 29-000

<u>Part No.</u>	<u>Description</u>	<u>No. Per Unit</u>	<u>Remarks</u>
<u>Facia Crash Pad</u>			
R902-61-06	Crash Pad Assembly Facia	1	
AUS8219001	Screw. Pad to Inst. Panel	6	
AUS8519001	Washer-Lock-Pad to Inst. Panel	6	
AUS8419001	Washer-Plain-Pad to Inst. Panel	6	

1969 RAMBLER - JAVELIN AND A. M. X.

LOCAL TRIM LIST

Model: 69-30-70

Group: 29-000

<u>Part No.</u>	<u>Description</u>	<u>No. Per Unit</u>	<u>Remarks</u>
<u>Door Trims</u>			
R902-61-36	Door Trim Assy. R/H	1	Black
R902-61-79	Door Trim Assy. R/H	1	Beige
R902-61-37	Door Trim Assy. L/H	1	Black
R902-61-80	Door Trim Assy. L/H	1	Beige

1969 - RAMBLER - JAVELIN

LOCAL TRIM LIST

Model: 69-70

Group: 29-000

<u>Part No.</u>	<u>Description</u>	<u>No. Per Unit</u>	<u>Remarks</u>
	<u>Headlining</u>		
R802-61-88	Headlining Assembly	1	Black
R902-61-83	Headlining Assembly	1	White

1969 RAMBLER - JAVELIN AND A. M. X.

LOCAL TRIM LIST

Model: 69-30-70

Group: 29-000

<u>Part No.</u>	<u>Description</u>	<u>No. Per Unit</u>	<u>Remarks</u>
<u>Carpets - Javelin</u>			
R902-61-44	Carpet Assy. Front Floor	1	Black
R902-61-81	Carpet Assy. Front Floor	1	Beige
R902-61-45	Carpet Assy. Rear Floor	1	Black
R902-61-82	Carpet Assy. Rear Floor	1	Beige
R802-61-17	Carpet Luggage Comp. Side RH	1	Citadel Grey
R802-61-18	Carpet Luggage Comp. Side LH	1	Citadel Grey
R802-61-19	Carpet Wheelarch. RH	1	Citadel Grey
R802-61-20	Carpet Wheelarch. LH	1	Citadel Grey
R802-61-21	Carpet Luggage Comp. Main	1	Citadel Grey
<u>Carpets - A. M. X.</u>			
R902-61-51	Carpet Assy. Front Floor	1	Black
R902-61-52	Carpet Assy. Rear Floor	1	Black
R902-61-54	Carpet Wheelarch. RH	1	Black
R902-61-55	Carpet Wheelarch. LH	1	Black
R902-61-56	Carpet Luggage Comp. Main	1	Grey
R802-61-17	Carpet Luggage Comp. Side RH	1	Grey
R802-61-18	Carpet Luggage Comp. Side LH	1	Grey
R902-61-96	Carpet Wheelarch. Luggage Comp. RH	1	Grey
R902-61-97	Carpet Wheelarch. Luggage Comp. LH	1	Grey

1969 RAMBLER - JAVELIN AND A. M. X.

LOCAL PARTS LIST

Model: 69-30-70

Group: 29-000

<u>Part No.</u>	<u>Description</u>	<u>No. Per Unit</u>	<u>Remarks</u>
	<u>Spare Wheel Cover</u>		
R802-61-23	Cover - Spare Wheel	1	